



BALCOMBE
GRAMMAR SCHOOL

SCHOOL UNIFORM GUIDELINES

JULY 2023

a connected community

SCHOOL UNIFORM POLICY

UNIFORM WARDROBE

- Students are permitted to wear one of the core uniform wardrobe options outlined in this handbook.
- The uniform wardrobe provides students with the opportunity to wear a uniform combination that is best suited to them.
- Students have the discretion to wear their choice of Term 1 and 4 or Term 2 and 3 uniform during Week 1 - 2 of Term 2 and 4 only.
- A formal dress code will apply to key celebratory events and services.
- Students are **NOT** permitted to mix and match items from the combinations outlined.

CORE UNIFORM

- **Blazers (Year 7 - 12) are to be worn to and from school at all times in Terms 2 and 3. In Terms 1 and 4 students have the discretion to not wear their blazer to and from School (Rain jackets are not to be worn as a substitute for the blazer or school jumper).**
- Terms 1 and 4: white short sleeved shirt can be worn with pants, shorts and skort.
- Terms 2 and 3: white long sleeved shirt can be worn with either pants, skirt, shorts or skorts.
- Students are to arrive and leave school in correct school uniform.
- The blazer is required at all formal events including assemblies and services.
- Dress and skirt length to be no shorter than knee length.
- Black leather belts must be worn with shorts/trousers that have belt loops.
- Any item worn under the uniform, such as a t-shirt, must not be visible.
- In accordance with the Sun Smart policy, hats are to be worn at recess and lunchtime and at all sporting / outdoor activities in Term 1 and 4. Beyond this, students may be asked to wear their hats on high UV days in Term 2 or 3. Hats should remain at school at all times.
- Black scarf only permitted and only with Winter uniform. Please note scarves are not permitted to be worn during class, assemblies or services.
- Uniforms must be maintained in good order. This entails being clean, ironed and in good repair. Any missing buttons must be replaced and hanging hemlines, torn pockets or seams re-sewn.
- A BGS school bag is a compulsory item. No other bag is acceptable for use to and from school or on excursion.

SHOES

Primary (Foundation - Year 6)

Three types of school shoes are permitted:

- Black leather lace up shoes.
- Black leather buckle up shoes.
- Black leather self-fastening (with velcro strap) shoes.

Secondary (Year 7 - 12)

Only two types of school shoes are permitted:

- Black leather lace up shoes.
- Black leather buckle up shoes.

All students (Foundation - Year 12)

- For all types of shoes, the heel is not to exceed 3cm.
- All shoes must be full black leather shoes not casual or sport shoes sold as school shoes or fashion shoes.
- Students wearing T-bar school shoes must have them buckled up.

SPORTS UNIFORM

Primary (Foundation - Year 6)

- Students are to present to school in correct sports uniform on days where they have practical Physical Education and ACP classes.
- Students may wear House tops for all House events and co-curricular activities such as Running Club.

Secondary (Year 7 - 12)

- Students are not permitted to present to school in sports uniform on days where they have practical Physical Education classes and are required to utilise the Secondary changerooms.
- If students have PE or sport after lunch, they may wear the sports uniform when they are leaving the school grounds. It is important to note that students wearing incorrect items with their sports uniform will be requested to change into full school uniform prior to departing the school grounds.

All students (Foundation - Year 12)

- Correct sports attire, including socks, must be worn to every sports lesson.
- Appropriate sports shoes, not casual shoes sold as sports shoes.
- The Rugby Top can be worn as an outer layer with the sports uniform.



SCHOOL UNIFORM POLICY

RAIN/HYBRID JACKET (PRIMARY)

- The lined Rain Jacket or Hybrid Jacket is an optional outer layer to be worn over the red jumper when accompanying the core uniform.
- The lined Rain Jacket or Hybrid Jacket may be worn as an outer garment on the way to and from school, during breaks, PE Lessons and on ACP/excursions/camps etc.
- The lined Rain Jacket (Black) is waterproof, with a hood, and is Balcombe branded.
- The lined Rain Jacket may not be worn in the classroom.
- The Hybrid Jacket may be worn in the classroom when Sports Uniform is required.

RAIN JACKET (SECONDARY)

- The Rain Jacket may be worn as an outer garment on the way to and from school, **when it is raining** (ie. students travelling to and from school should be wearing either a Balcombe branded shirt, Blazer or Rain Jacket, when it is raining).
- The Rain Jacket may be worn as an outer garment on excursions, tours and field trips, **when it is raining**.
- The Rain Jacket does not replace the School Blazer, which is required at all formal events including assemblies and services.
- The Rain Jacket (Black) is waterproof, with a hood, and is Balcombe branded.
- The Rain Jacket may not be worn in the classroom.

YEAR 9 STRIVE

Year 9 students are permitted to wear their complete STRIVE branded uniform on Wednesdays and for STRIVE excursions.

The complete uniform consists of:

- STRIVE Polo
- STRIVE Soft Shell Jacket
- Black BGS branded tracksuit pants
- Black BGS branded sports shorts
- BGS sports socks
- Sports shoes

Please note: the STRIVE Soft Shell Jacket can be worn as the outer layer throughout the entire Year 9 journey. It is however, not permitted to be worn at any other year level or during formal occasions such as services and assemblies.

MAKEUP / JEWELLERY / ACCESSORIES

- No makeup is permitted. This includes lipstick and coloured lip gloss.
- No nail polish – no artificial nails.
- No hats or sunglasses to be worn in class.

No jewellery is permitted except for the following:

Primary (Foundation - Year 6)

- A watch.
- Students may wear one set of discreet earrings in the lower earlobe, either sleepers, small hoops or plain studs with nothing hanging from them. Additional ear piercing must have clear blanks.
- No face piercings are permitted.
- No rings, bracelets, necklaces or ankle jewellery are permitted.
- A small cross on a chain that is long enough for it not to be visible at the neck is permitted.

Secondary (Year 7 - 9)

- A watch.
- Students may wear two sets of discreet earrings in the lower earlobe, either sleepers, small hoops or plain studs with nothing hanging from them. Additional ear piercing must have clear blanks.
- No face piercings are permitted.
- No rings, bracelets or ankle jewellery are permitted.
- One thin, plain metal necklace is allowed with or without a small cross.

Secondary (Year 10 - 12)

- A watch.
- Students may wear two sets of discreet earrings in the lower earlobe, either sleepers, small hoops or plain studs with nothing hanging from them. Additional ear piercing must have clear blanks.
- A small/discreet nose stud (not ring) is permitted.
- No other face piercings are permitted.
- A simple ring worn on one finger is permitted.
- One thin, plain metal necklace is allowed with or without a small cross.
- No bracelets or ankle jewellery are permitted.

Please note:

- **Students who are deemed to be wearing indiscreet jewellery will be required to remove the item. The school will determine what is, or is not, discreet.**
- **At times, jewellery will not be permitted for safety reasons such as during sport and selected practical classes. It is the responsibility of the student to safely store their personal items and the school accepts no responsibility for the loss or theft of any personal jewellery.**

SCHOOL UNIFORM POLICY

HAIR

Primary (Foundation - Year 6)

- Hair to be tied back if it touches or extends past the collar.

Secondary (Year 7 - 12)

- Hair is to be presentable and clear of the face, particularly during class time.
- Hair is to be tied back if it touches or extends past the shoulder for formal occasions, school photographs and specific classes where safety is an issue (Science, PDT, Food Technology...).
- Boys must be clean shaven.

All students (Foundation - Year 12)

- Hair ties can be worn in summer and winter fabrics or plain hair ties in one of the school colours of red, grey or black.
- Coloured hair clips, ties and headbands must be red, grey or black.
- No extreme hairstyles are permitted, including but not limited to mullets, shaved patterns, mohawks, and dreadlocks.
- Hair colour/tips must not be noticeably different from natural hair colour.
- Minimum top hair length is No. 2 blade and severe 'undercuts' are not acceptable.

PROCEDURE FOR INCOMPLETE UNIFORM

Students arriving at school without complete school uniform must have an explanatory note from parents. Any student not in complete uniform will incur an infringement. Failure to comply with uniform policy may result in:

- An educative discussion in the first instance.
- A phone call to parents asking them to bring the necessary items to school or to remedy the situation.
- A letter home to parents outlining the situation and asking for compliance.
- A detention.
- Internal suspension until the situation is remedied.
- Exclusion from school until the student complies.

From time to time it may be necessary to clarify an issue relating to uniform during the year, which will be clearly communicated to the School community via assemblies and newsletters.

SCHOOL EVENTS / EXCURSIONS

All Balcombe Grammar School events and excursions must be attended in full school uniform, including blazer (Terms 2 and 3) for Secondary students.

Students who are not in full school uniform will not participate in the excursion.

If the nature of the activity requires alternative clothing (eg. sports uniform) this must be approved by the Principal and/or Leadership Team (ACP, SIS and selected Year 9 STRIVE excursions).

UNIFORM SHOP

Our uniform is available through the onsite uniform shop (located in L Block opposite the school administration building). They are the only authorised supplier of the Balcombe Grammar School uniform and no substitutions should be made. Orders can be placed either online, over the phone or in person with key contact details outlined below:

Phone: 5970 1100

Email: schoollocker@balcombegrammar.vic.edu.au

Online store: <https://theschoollocker.com.au/schools/balcombe-grammar-school/uniforms>

SECONDHAND UNIFORMS

The Balcombe Grammar School Parents and Friends Committee (PFC) are pleased to be able to provide an online facility for school families to be able to buy and sell their second-hand uniforms, textbooks and other student resources.

How it works:

- Log on to the Sustainable School Shop website and nominate Balcombe Grammar as your school
- You can register your own account and password with the annual subscription to the service provided to you free of charge by the school
- List your second-hand uniform and/or textbook items for sale
- The school's uniform and book-lists are already loaded into the system to make listing your ad easy
- You can list a wanted ad for those items you are looking to buy
- The system matches the ads of buyers with sellers and notifies the buyer via email
- Buyers contact sellers and arrange where and when to trade

<https://www.sustainableschoolshop.com.au>



BALCOMBE
GRAMMAR SCHOOL

SCHOOL UNIFORM POLICY

SCHOOL BADGES (YEAR 7 - 12)

Colours Badge/s are to be displayed on the right lapel of the school blazer. Only one level of each Colours badge can be displayed.

For example, if a student currently has a bronze badge and is awarded silver, the bronze badge must be removed from the blazer and replaced with the higher level achieved.

Only **one** School Production Badge can be worn for 12 months by members of the cast and crew on the right lapel of the school blazer (to be replaced by the following year's production badge).

Students are also permitted to wear a badge of their choice that is in line with our school values, on their right lapel

The Year 12 School Shield and House Shield are to be displayed on the left lapel of the blazer.

Student Leadership badge (highest level achieved) to be displayed at the top of the left lapel.

House Colours and/or Captains badge (highest level achieved) are to be displayed above the House Shield.



Badges from other schools / sources are not to be worn with School uniform, without permission of the Principal.

CORE UNIFORM WARDROBE

FOUNDATION - YEAR 2



Red Jumper

TERM 2 & 3*



White Long Sleeve Shirt
Grey Elastic Trousers
Grey Anklet Socks

White Long Sleeve Shirt
with Peter Pan Collar
Grey Tunic
Grey Anklet Socks or Black Tights

White Long Sleeve Shirt
Grey Elastic Shorts
Grey Anklet Socks

White Long Sleeve Shirt
Grey Skort
Grey Anklet Socks

FORMAL DRESS

required for all formal school
events in Term 1 - 4



Black Lace-up, T-Bar or Self-Fastening Shoes

*Students have the discretion to wear their choice of Term 1 and 4 or Term 2 and 3 uniform during Week 1 - 2 of Term 2 and 4 only.



BALCOMBE
GRAMMAR SCHOOL

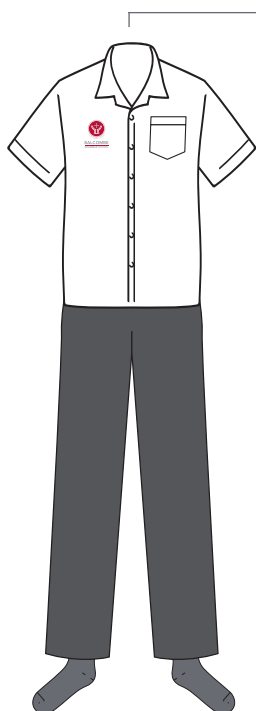
CORE UNIFORM WARDROBE

FOUNDATION - YEAR 2



Red Jumper

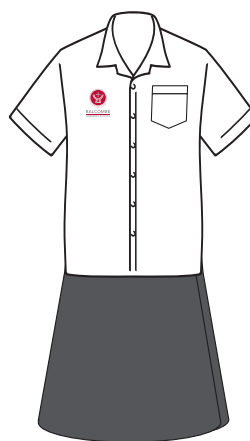
TERM 1 & 4*



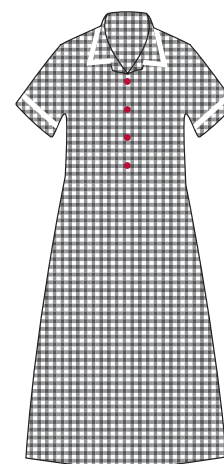
White Short Sleeve
Shirt with Logo
Grey Elastic Trousers
Grey Anklet Socks



White Short Sleeve Shirt
with Logo
Grey Elastic Shorts
Grey Anklet Socks



White Short Sleeve
Shirt with Logo
Grey Skort
Grey Anklet Socks



Dress
White Anklet Socks



Black Lace-up, T-Bar or Self-Fastening Shoes

*Students have the discretion to wear their choice of Term 1 and 4 or Term 2 and 3 uniform during Week 1 - 2 of Term 2 and 4 only.

CORE UNIFORM WARDROBE

YEAR 3 - 4



Red Jumper

TERM 2 & 3*



White Long Sleeve Shirt
Black Tie
Grey Elastic Trousers
Grey Anklet Socks

White Long Sleeve Shirt
Black Tie
Grey Tunic
Grey Anklet Socks or Black Tights

White Long Sleeve Shirt
Black Tie
Grey Elastic Shorts
Grey Anklet Socks

White Long Sleeve Shirt
Black Tie
Grey Skort
Grey Anklet Socks

FORMAL DRESS

required for all formal school
events in Term 1 - 4



Black Lace-up, T-Bar or Self-Fastening Shoes

*Students have the discretion to wear their choice of Term 1 and 4 or Term 2 and 3 uniform during Week 1 - 2 of Term 2 and 4 only.



BALCOMBE
GRAMMAR SCHOOL

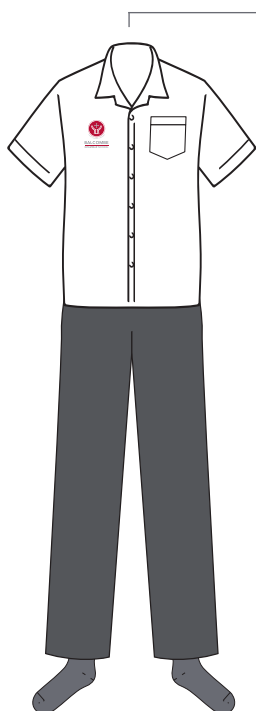
CORE UNIFORM WARDROBE

YEAR 3 - 4



Red Jumper

TERM 1 & 4*



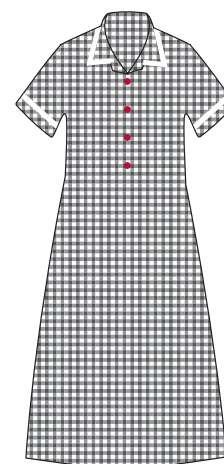
White Short Sleeve
Shirt with Logo
Grey Elastic Trousers
Grey Anklet Socks



White Short Sleeve Shirt
with Logo
Grey Elastic Shorts
Grey Anklet Socks



White Short Sleeve
Shirt with Logo
Grey Skort
Grey Anklet Socks



Dress
White Anklet Socks



Black Lace-up, T-Bar or Self-Fastening Shoes

*Students have the discretion to wear their choice of Term 1 and 4 or Term 2 and 3 uniform during Week 1 - 2 of Term 2 and 4 only.

CORE UNIFORM WARDROBE

YEAR 5 - 6



Red Jumper

TERM 2 & 3*



White Long Sleeve Shirt
Black Tie
Grey Elastic Trousers
Grey Anklet Socks

White Long Sleeve Shirt
Black Tie
Grey Skirt
Grey Anklet Socks or Black Tights

White Long Sleeve Shirt
Black Tie
Grey Tunic
Grey Anklet Socks or Black Tights

White Long Sleeve Shirt
Black Tie
Grey Elastic Shorts
Grey Anklet Socks

FORMAL DRESS

required for all formal school events in Term 1 - 4



Black Lace-up, T-Bar or Self-Fastening Shoes

*Students have the discretion to wear their choice of Term 1 and 4 or Term 2 and 3 uniform during Week 1 - 2 of Term 2 and 4 only.



BALCOMBE
GRAMMAR SCHOOL

CORE UNIFORM WARDROBE

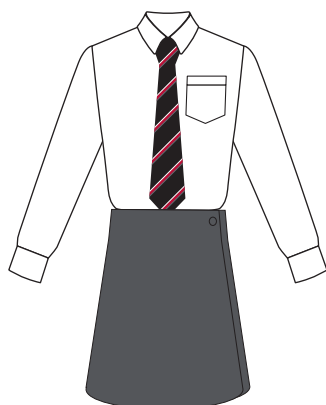
YEAR 5 - 6



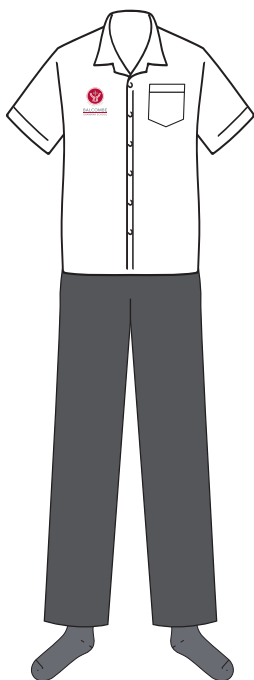
Red Jumper

TERM 2 & 3*

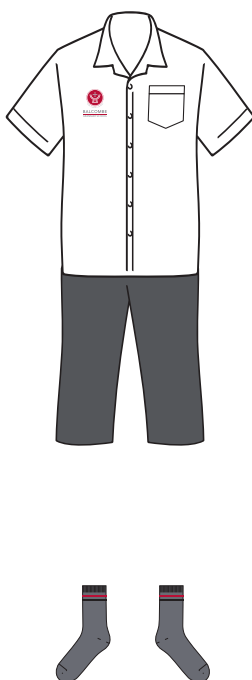
TERM 1 & 4*



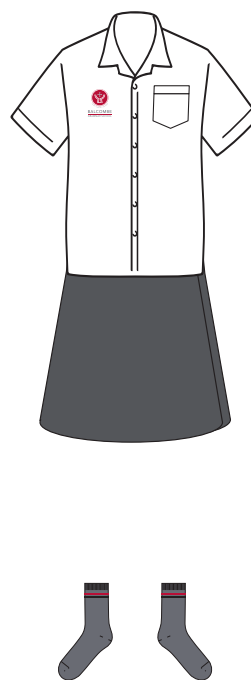
White Long
Sleeve Shirt
Black Tie
Grey Skort
Grey Anklet Socks



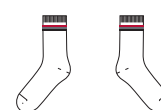
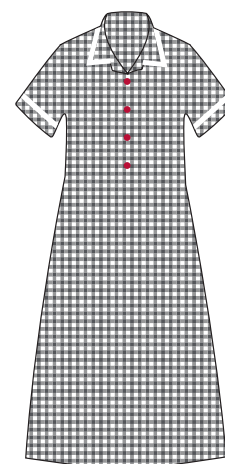
White Short Sleeve
Shirt with Logo
Grey Elastic Trousers
Grey Anklet Socks



White Short Sleeve Shirt
with Logo
Grey Elastic Shorts
Grey Anklet Socks



White Short Sleeve
Shirt with Logo
Grey Skort
Grey Anklet Socks



Dress
White Anklet
Socks



Black Lace-up, T-Bar or Self-Fastening Shoes

*Students have the discretion to wear their choice of Term 1 and 4 or Term 2 and 3 uniform during Week 1 - 2 of Term 2 and 4 only.

CORE UNIFORM WARDROBE

YEAR 7 - 9



Blazer



Red Jumper

TERM 2 & 3*



White Long Sleeve Shirt
Black Tie
Grey Trousers with Black Belt
Grey Anklet Socks

White Long Sleeve Shirt
Black Tie
Grey Skirt
Grey Anklet Socks or Black Tights

White Long Sleeve Shirt
Black Tie
Grey Shorts with
Black Belt
Grey Anklet Socks

White Long Sleeve Shirt
Black Tie
Grey Skort
Grey Anklet Socks

FORMAL DRESS

required for all formal school
events in Term 1 - 4



Black Lace-up or T-Bar Shoes

*Students have the discretion to wear their choice of Term 1 and 4 or Term 2 and 3 uniform during Week 1 - 2 of Term 2 and 4 only.



BALCOMBE
GRAMMAR SCHOOL

CORE UNIFORM WARDROBE

YEAR 7 - 9

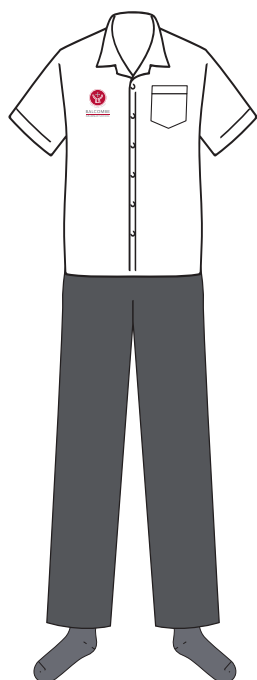


Blazer



Red Jumper

TERM 1 & 4*



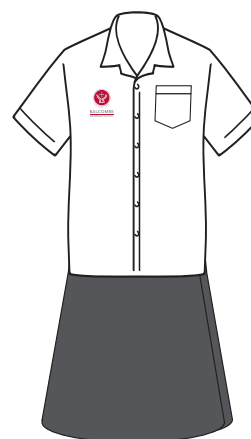
White Short Sleeve
Shirt with Logo
Grey Trousers with
Black Belt
Grey Anklet Socks



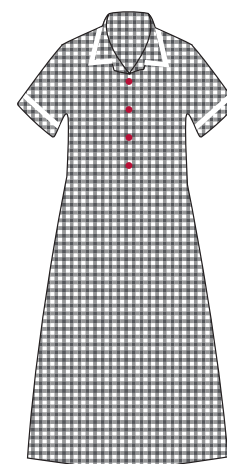
White Short Sleeve
Shirt with Logo
Grey Skirt
Grey Anklet Socks



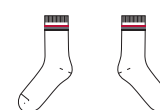
White Short Sleeve
Shirt with Logo
Grey Shorts with
Black Belt
Grey Anklet Socks



White Short Sleeve
Shirt with Logo
Grey Skirt
Grey Anklet Socks



Dress
White Anklet
Socks



Black Lace-up or T-Bar Shoes

*Students have the discretion to wear their choice of Term 1 and 4 or Term 2 and 3 uniform during Week 1 - 2 of Term 2 and 4 only.

CORE UNIFORM WARDROBE

YEAR 10 - 12



Blazer



Black Jumper

TERM 2 & 3*



White Long Sleeve Shirt
Red Tie
Grey Trousers with Black Belt
Grey Anklet Socks

White Long Sleeve Shirt
Red Tie
Grey Skirt
Grey Anklet Socks or Black Tights

White Long Sleeve Shirt
Red Tie
Grey Shorts with Black Belt
Grey Anklet Socks

White Long Sleeve Shirt
Red Tie
Grey Skort
Grey Anklet Socks

FORMAL DRESS

required for all formal school events in Term 1 - 4



Black Lace-up or T-Bar Shoes

*Students have the discretion to wear their choice of Term 1 and 4 or Term 2 and 3 uniform during Week 1 - 2 of Term 2 and 4 only.



BALCOMBE
GRAMMAR SCHOOL

CORE UNIFORM WARDROBE

YEAR 10 - 12

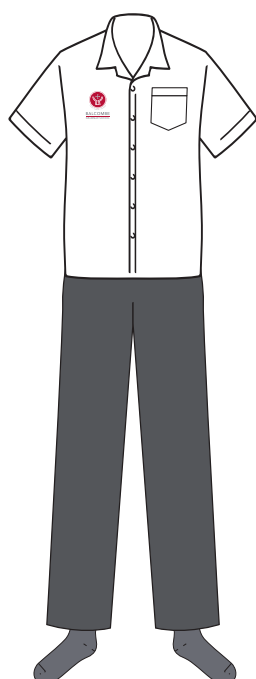


Blazer



Black Jumper

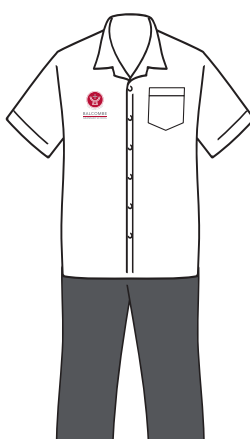
TERM 1 & 4*



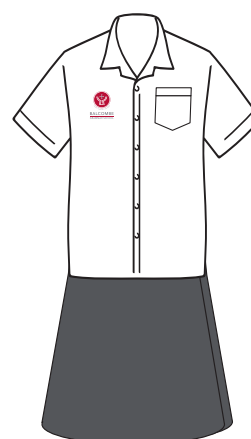
White Short Sleeve
Shirt with Logo
Grey Trousers with
Black Belt
Grey Anklet Socks



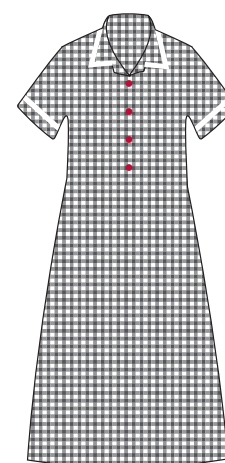
White Short Sleeve
Shirt with Logo
Grey Skirt
Grey Anklet Socks



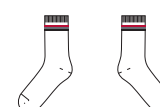
White Short Sleeve
Shirt with Logo
Grey Shorts with
Black Belt
Grey Anklet Socks



White Short Sleeve
Shirt with Logo
Grey Skirt
Grey Anklet Socks



Dress
White Anklet
Socks



Black Lace-up or T-Bar Shoes

*Students have the discretion to wear their choice of Term 1 and 4 or Term 2 and 3 uniform during Week 1 - 2 of Term 2 and 4 only.

SPORTS UNIFORM

FOUNDATION - YEAR 12



Hybrid Jacket



Rugby Jumper



Rash Vest
(Year 3 - 12)



Boys Sports Polo



Girls Sports Polo



Unisex Polo



Sports Short



Sports Leggings



Fleece Trackpant
(Foundation - Year 6)



Fleece Trackpant
(Year 5 - 12)



Sport Socks with
Black Hoops



Sports Shoes



BALCOMBE
GRAMMAR SCHOOL

HOUSE SPORT FOUNDATION - YEAR 12



Casey House Polo



Leaver House Polo



Norman House Polo



Weston House Polo

STRIVE PROGRAM

YEAR 9



STRIVE Program
Hybrid Jacket
(Year 9)



STRIVE Program
Boys Polo
(Year 9)



STRIVE Program
Girls Polo
(Year 9)



BALCOMBE
GRAMMAR SCHOOL

ACCESSORIES

FOUNDATION - YEAR 12



Slouch Hat with Logo



Reversible Bucket Hat with Logo and House Colours



Lined Rain Jacket
(Foundation - Year 6)



Rain Jacket
(Year 7 - 12)



Sports Cap
(Year 7 - 12)



Primary School Bag
(Foundation - Year 6)



Secondary School Bag
(Year 7 - 12)



Sports Bag



Black Scarf



Black Gloves



Black, Red or Grey
Hair Accessories

Primary and Secondary Co-education

CSV LTD ABN 93 061 557 364

389 Nepean Highway Mount Martha Victoria 3934 Australia PO Box 607 Mount Martha Victoria 3934 Australia

Telephone: +61 3 5970 1100 Facsimile: +61 3 5974 2755 Email: info@balcombegrammar.vic.edu.au

www.balcombegrammar.vic.edu.au